

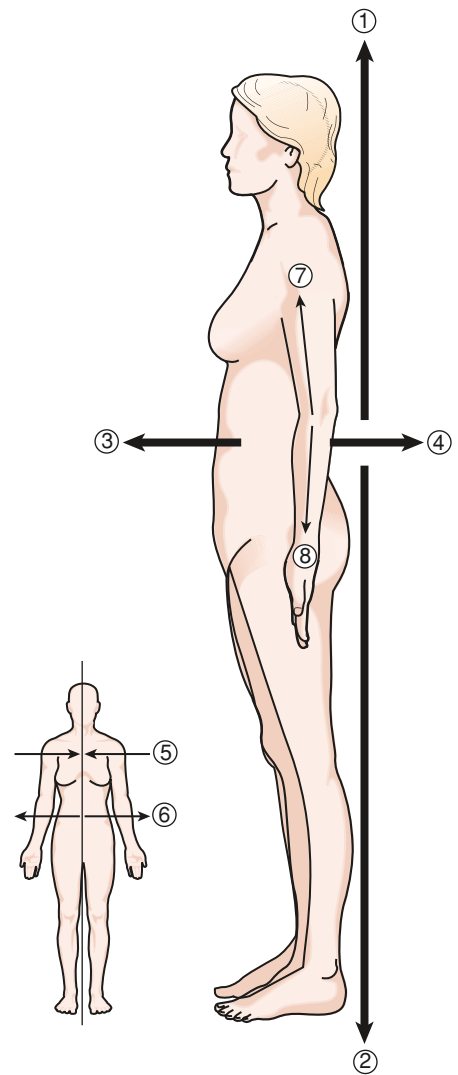
## Labeling Exercise

### DIRECTIONAL TERMS

Write the name of each numbered part on the corresponding line of the answer sheet.

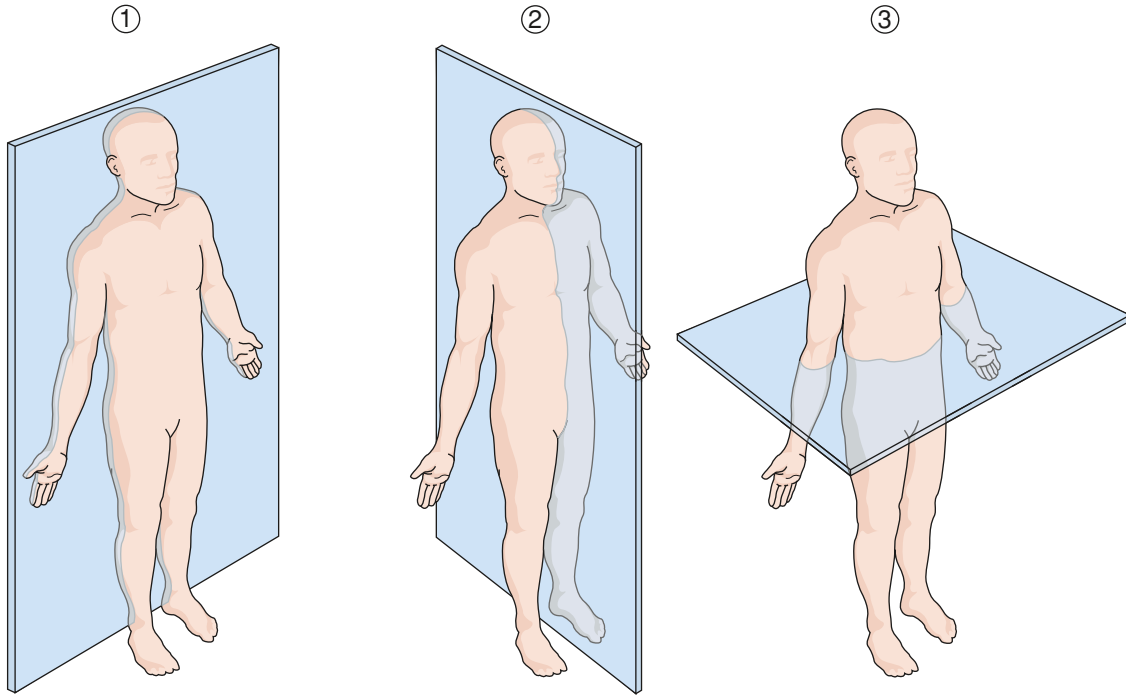
- |                    |                    |
|--------------------|--------------------|
| Anterior (ventral) | Medial             |
| Distal             | Posterior (dorsal) |
| Inferior (caudal)  | Proximal           |
| Lateral            | Superior (cranial) |

1. \_\_\_\_\_
2. \_\_\_\_\_
3. \_\_\_\_\_
4. \_\_\_\_\_
5. \_\_\_\_\_
6. \_\_\_\_\_
7. \_\_\_\_\_
8. \_\_\_\_\_



**PLANES OF DIVISION**

Write the name of each numbered part on the corresponding line of the answer sheet.



Frontal (coronal) plane  
Sagittal plane

Transverse (horizontal) plane

1. \_\_\_\_\_
2. \_\_\_\_\_
3. \_\_\_\_\_

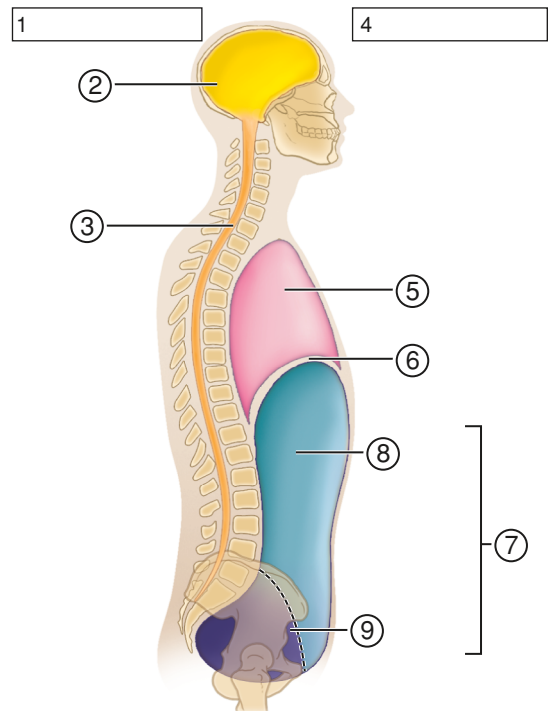
**BODY CAVITIES, LATERAL VIEW**

Write the name of each numbered part on the corresponding line of the answer sheet.

Abdominal cavity  
Abdominopelvic cavity  
Cranial cavity  
Dorsal cavity  
Diaphragm

Pelvic cavity  
Spinal cavity (canal)  
Thoracic cavity  
Ventral cavity

1. \_\_\_\_\_
2. \_\_\_\_\_
3. \_\_\_\_\_
4. \_\_\_\_\_
5. \_\_\_\_\_
6. \_\_\_\_\_
7. \_\_\_\_\_
8. \_\_\_\_\_
9. \_\_\_\_\_

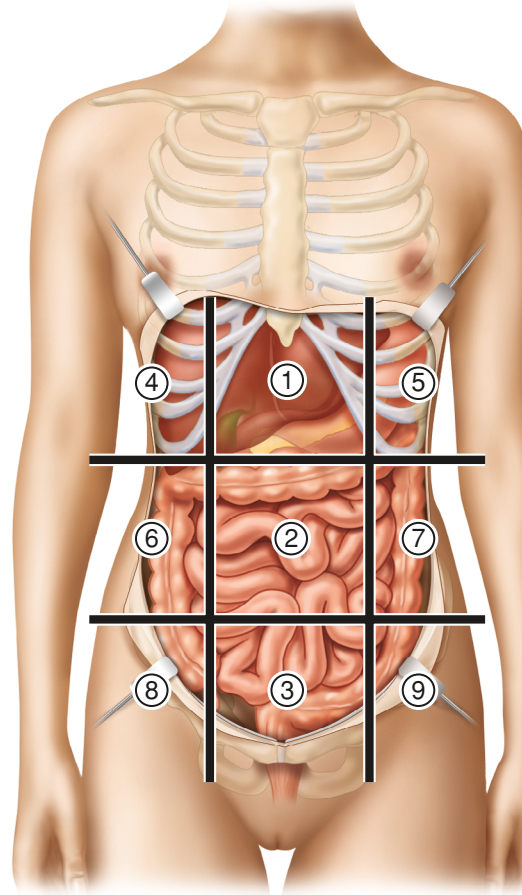


**THE NINE REGIONS OF THE ABDOMEN**

Write the name of each numbered part on the corresponding line of the answer sheet.

- |                              |                               |
|------------------------------|-------------------------------|
| Epigastric region            | Right hypochondriac region    |
| Hypogastric region           | Right iliac (inguinal) region |
| Left hypochondriac region    | Right lumbar region           |
| Left iliac (inguinal) region | Umbilical region              |
| Left lumbar region           |                               |

1. \_\_\_\_\_
2. \_\_\_\_\_
3. \_\_\_\_\_
4. \_\_\_\_\_
5. \_\_\_\_\_
6. \_\_\_\_\_
7. \_\_\_\_\_
8. \_\_\_\_\_
9. \_\_\_\_\_



Abdominal regions

**Terminology**

**MATCHING**

Match the following terms, and write the appropriate letter to the left of each number.

- |                         |   |
|-------------------------|---|
| _____ 1. thoracentesis  | a. surgical puncture of the chest         |
| _____ 2. acrodermatitis | b. skin inflammation of the extremities   |
| _____ 3. laparoscopy    | c. pertaining to the right foot           |
| _____ 4. dextropedal    | d. examination through the abdominal wall |
| _____ 5. caudal         | e. toward the tail                        |
| _____ 6. macropodia     | a. circular cut                           |
| _____ 7. subdermal      | b. excessive size of the feet             |
| _____ 8. macrocephaly   | c. beneath the skin                       |
| _____ 9. celiotomy      | d. abnormal largeness of the head         |
| _____ 10. circumcision  | e. incision of the abdomen                |

*Supplementary Terms*

- |                     |  |
|---------------------|--|
| _____ 11. fundus    | a. passage or opening                        |
| _____ 12. meatus    | b. circular muscle that regulates an opening |
| _____ 13. lumen     | c. central opening of a tube                 |
| _____ 14. sphincter | d. base of a hollow organ                    |
| _____ 15. septum    | e. dividing wall                             |

**TRUE-FALSE**

Examine each of the following statements. If the statement is true, write T in the first blank. If the statement is false, write F in the first blank and correct the statement by replacing the underlined word in the second blank.

	True or False	Correct Answer
16. The cranial and spinal cavities are the <u>ventral</u> body cavities.	F	_____ dorsal _____
17. A <u>midsagittal plane</u> divides the body into equal right and left parts.	_____	_____
18. The wrist is <u>proximal</u> to the elbow.	_____	_____
19. A <u>transverse plane</u> divides the body into anterior and posterior parts.	_____	_____
20. The abdominal cavity is <u>inferior</u> to the pelvic cavity.	_____	_____
21. The hypogastric region is <u>inferior</u> to the umbilical region.	_____	_____
22. When B.K. in the opening case study was lying in the supine position, he was lying <u>face down</u> .	_____	_____
23. The right hypochondriac region is in the <u>RUQ</u> .	_____	_____

**ADJECTIVES**

Name the part of the body referred to in the following adjectives.

- 24. celiac \_\_\_\_\_
- 25. phalangeal \_\_\_\_\_
- 26. popliteal \_\_\_\_\_
- 27. occipital \_\_\_\_\_
- 28. carpal \_\_\_\_\_
- 29. cervical \_\_\_\_\_
- 30. lumbar \_\_\_\_\_
- 31. brachial \_\_\_\_\_

Define the following words.

- 32. laparoscope \_\_\_\_\_
- 33. suprapubic \_\_\_\_\_
- 34. infraumbilical \_\_\_\_\_
- 35. cervicofacial \_\_\_\_\_
- 36. sublingual \_\_\_\_\_
- 37. retroperitoneal \_\_\_\_\_
- 38. bipedal \_\_\_\_\_

**SYNONYMS**

Write a word that means the same as each of the following.

- 39. posterior \_\_\_\_\_
- 40. circumocular \_\_\_\_\_
- 41. submammary \_\_\_\_\_
- 42. ventral \_\_\_\_\_

**OPPOSITES**

Write a word that means the opposite of each of the following.

- 43. microcephaly \_\_\_\_\_
- 44. deep \_\_\_\_\_
- 45. proximal \_\_\_\_\_
- 46. subscapular \_\_\_\_\_
- 47. extracellular \_\_\_\_\_
- 48. superior \_\_\_\_\_

**ELIMINATIONS**

In each of the sets below, write the word that does not fit in with the rest and explain the reason for your choice.

- 49. cervic/o — dactyl/o — brachi/o — acro — pod/o \_\_\_\_\_
- 50. umbilical region — hypochondriac region — epigastric region — cervical region — iliac region \_\_\_\_\_
- 51. jackknife — supine — transverse — decubitus — prone \_\_\_\_\_
- 52. thoracic cavity — spinal cavity — pelvic cavity — abdominal cavity — abdominopelvic cavity \_\_\_\_\_

**WORD BUILDING**

Write a word for each of the following definitions using the word parts provided.

spasm    cephal    -o-    dactyl    extra-    -ic    infra-    syn-    thorac    a-    intra-    -y    poly-

- 53. cramp of a finger or toe \_\_\_\_\_
- 54. below the chest \_\_\_\_\_
- 55. inside the chest \_\_\_\_\_
- 56. condition of having extra fingers or toes \_\_\_\_\_
- 57. fusion of the fingers or toes \_\_\_\_\_
- 58. pertaining to the head and chest \_\_\_\_\_
- 59. absence of a finger or toe \_\_\_\_\_
- 60. within the head \_\_\_\_\_
- 61. absence of a head \_\_\_\_\_

**WORD ANALYSIS**

Define each of the words below, and give the meaning of the word parts in each. Use a dictionary if necessary.

- 62. mesocephalic (*mes-o-seh-FAL-ik*) \_\_\_\_\_
  - a. mes/o \_\_\_\_\_
  - b. cephal/o \_\_\_\_\_
  - c. -ic \_\_\_\_\_
- 63. acrocyanosis (*ak-ro-si-ab-NO-sis*) \_\_\_\_\_
  - a. acro \_\_\_\_\_
  - b. cyan/o \_\_\_\_\_
  - c. -sis \_\_\_\_\_

64. antebrachial (*an-te-BRA-ke-al*) \_\_\_\_\_
- a. ante- \_\_\_\_\_
  - b. brachi/o \_\_\_\_\_
  - c. -al \_\_\_\_\_
65. epigastric (*ep-ih-GAS-trik*) \_\_\_\_\_
- a. epi- \_\_\_\_\_
  - b. gastr/o \_\_\_\_\_
  - c. -ic \_\_\_\_\_

For more learning activities, see Chapter 5 of the Student Resources on [thePoint](#).